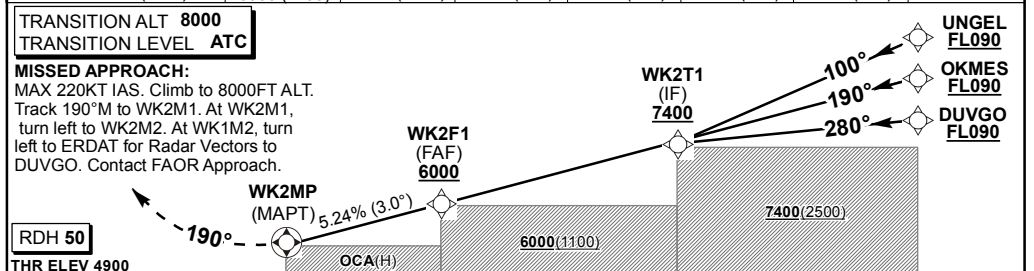


DIST (NM) to WK2MP	3.3	3.0	2.3	2.0	1.3	1.0
ADVISORY ALT(HGT)	6000 (1100)	5910 (1010)	5690 (790)	5590 (690)	5370 (470)	5270 (370)



CHANGE: NEW Procedure

Straight-in Approach	OCA (H)					GS							
	LNVA	A	B	C	D	WK2F1 to WK2MP	KT	80	100	120	140	160	180
LNVA/VNVA	2.5%	5590 (690)	5590 (690)	5590 (690)	5590 (690)	M:S	2:29	1:59	1:39	1:25	1:14	1:06	
	2.5%	5410 (510)	5410 (510)	5410 (510)	5410 (510)	Rate of descent	FPM	424	530	636	742	848	955
RVR		1000m	1200m	1200m	1600m	NOTE:							
ALS OUT		1500m	1500m	1800m	2000m	1. Rate of descent is 5.24%.							
Circling	At the discretion of the pilot in command.					2. MAPT at THR.							
						3. Turn prior MAPT prohibited.							
4. BaroVNAV operations not authorised below -5°C and MAX VPA 3.5° temperature +61°C.													